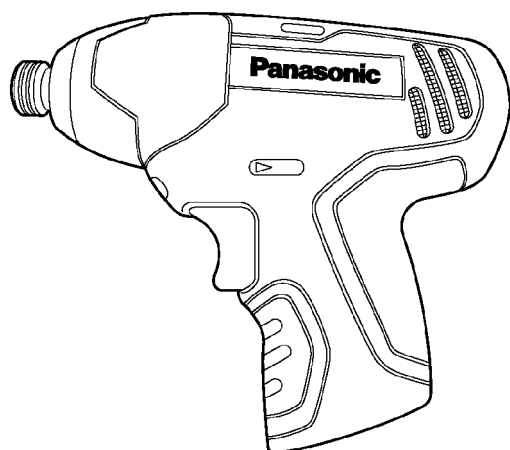


# Service Manual

Impact driver

Model No. **EY7530**


Europe



## **WARNING**

This service information is designed for experienced repair technicians only and is not designed for use by the general public. It does not contain warnings or cautions to advise non-technical individuals of potential dangers in attempting to service a product. Products powered by electricity should be serviced or repaired only by experienced professional technicians. Any attempt to service or repair the product or products dealt with in this service information by anyone else could result in serious injury or death.

## **IMPORTANT SAFETY NOTICE**

There are special components used in this equipment which are important for safety. These parts are marked by  in the Schematic Diagrams, Circuit Board Diagrams, Exploded Views and Replacement Parts List. It is essential that these critical parts should be replaced with manufacturer's specified parts to prevent shock, fire or other hazards. Do not modify the original design without permission of manufacturer.

## TABLE OF CONTENTS

	PAGE	PAGE
1 Warning-----	2	
2 Specifications -----	2	
3 Troubleshooting Guide-----	3	
4 Disassembly and Assembly Instructions -----	6	
5 Wiring Connection Diagram -----	10	
6 Schematic Diagram-----	10	
7 Exploded View and Replacement Parts List -----	11	

# Panasonic

© Panasonic Corporation 2014. All rights reserved.  
Unauthorized copying and distribution is a violation  
of law.

# 1 Warning

## Caution:

- Pb free solder has a higher melting point than standard solder; Typically the melting point is 50 - 70°F (30 - 40°C) higher. Please use a soldering iron with temperature control and adjust it to 750 ± 20°F (400 ± 10°C). In case of using high temperature soldering iron, please be careful not to heat too long.
- Pb free solder will tend to splash when heated too high (about 1100°F / 600°C).

# 2 Specifications

Model No.	EY7530
Battery voltage	DC 10.8 V
No load speed	0 min <sup>-1</sup> (rpm) ~ 2200 min <sup>-1</sup> (rpm)
Maximum torque	90 N·m
Impact per minute	0 min <sup>-1</sup> (rpm) ~ 2700 min <sup>-1</sup> (rpm)
Overall length	165 mm
Weight	0.98 kg
Noise, Vibration	Typical Noise Emission Values according to EN 60745; Sound Pressure Level (L <sub>pA</sub> ) : 90 dB (A) Sound Power Level (L <sub>WA</sub> ) : 101 dB Uncertainty (K) : 3 dB Typical Vibration according to EN 60745 : 8.89 m/s <sup>2</sup> Uncertainty (K) : 1.5 m/s <sup>2</sup>

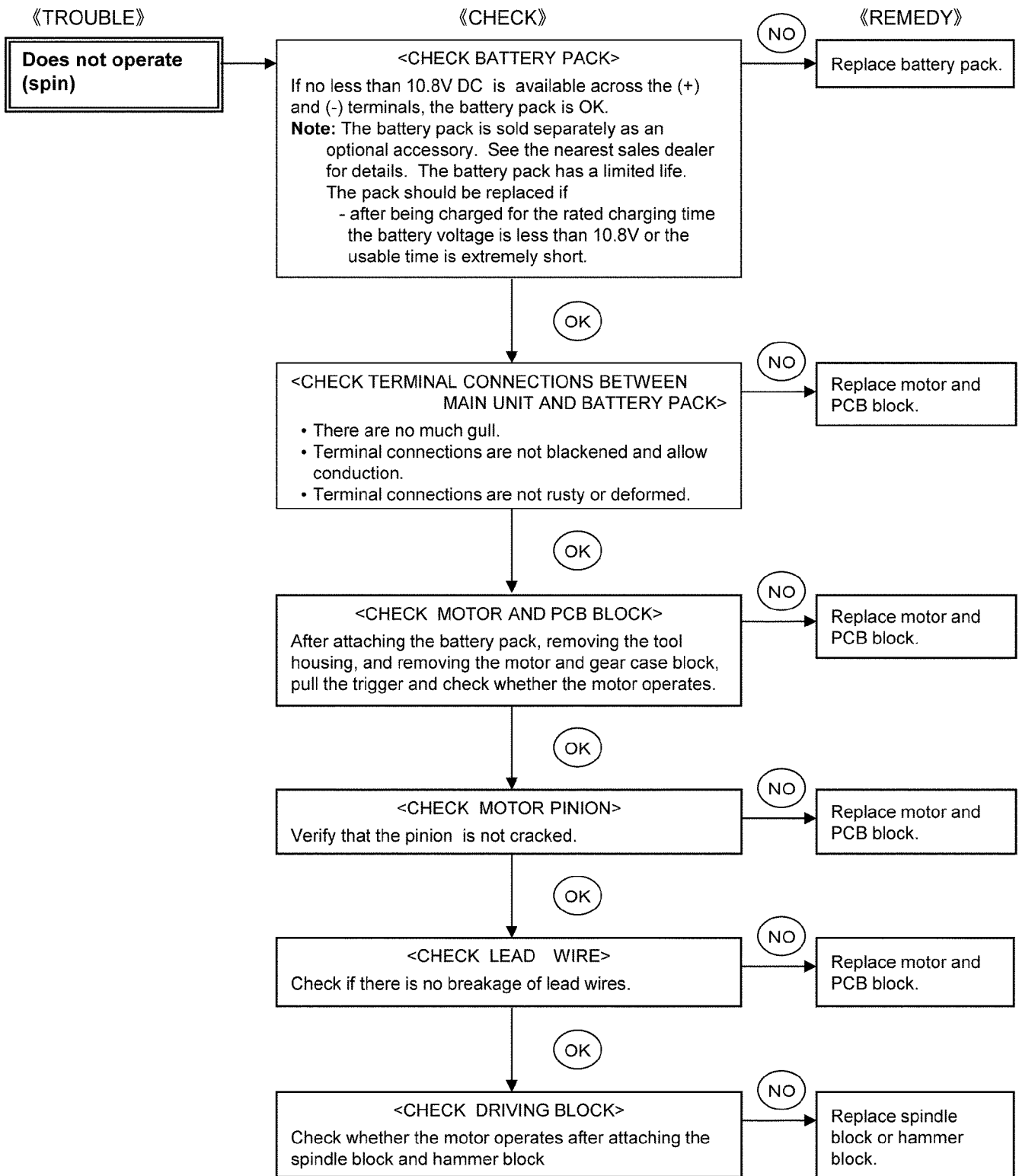
## NOTE: Weight indication

Greater than or equal to 1kg : indicated by 0.05kg.

Less than 1kg : indicated by 0.01kg.

## 3 Troubleshooting Guide

### 3.1. Troubleshooting Guide



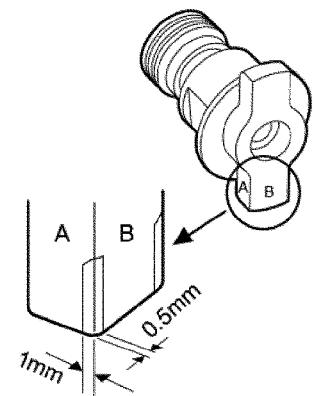
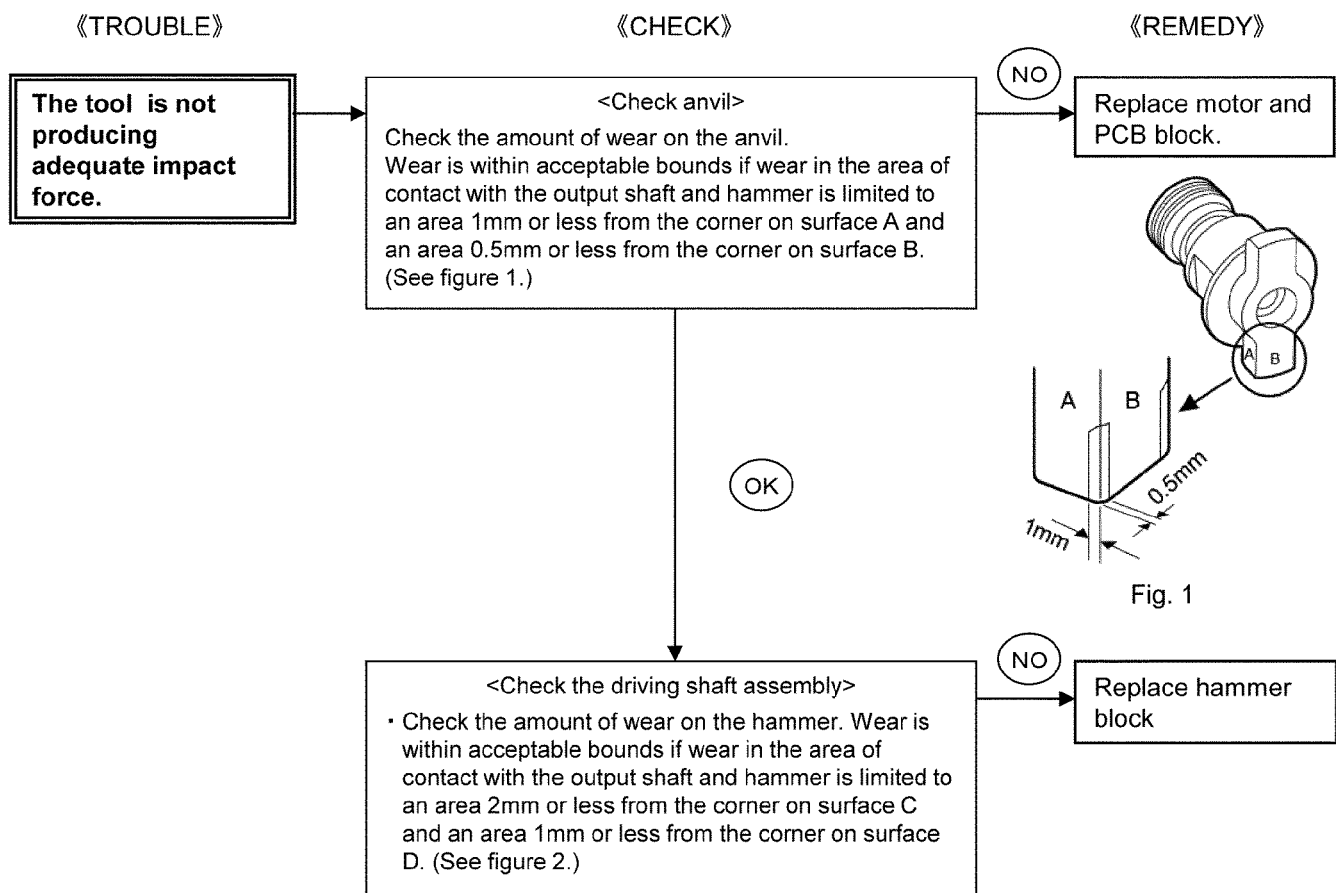
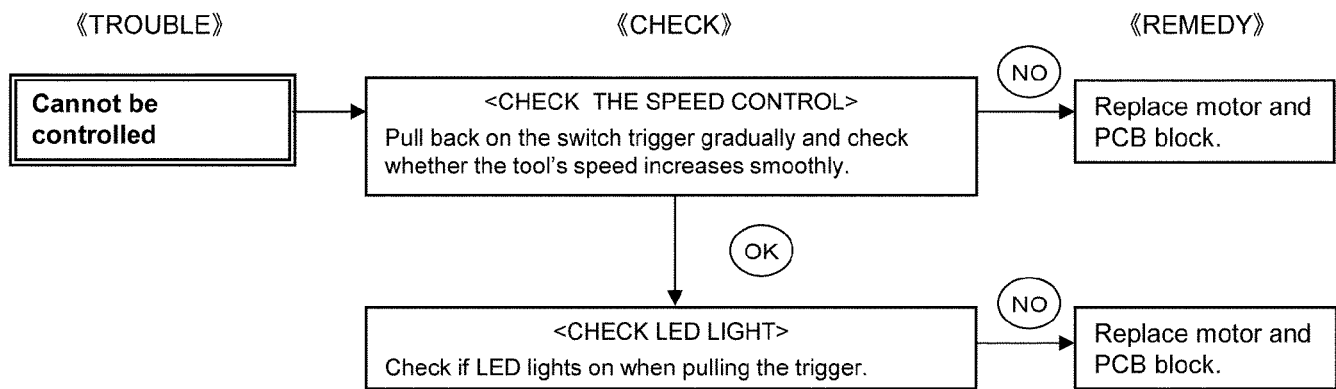


Fig. 1

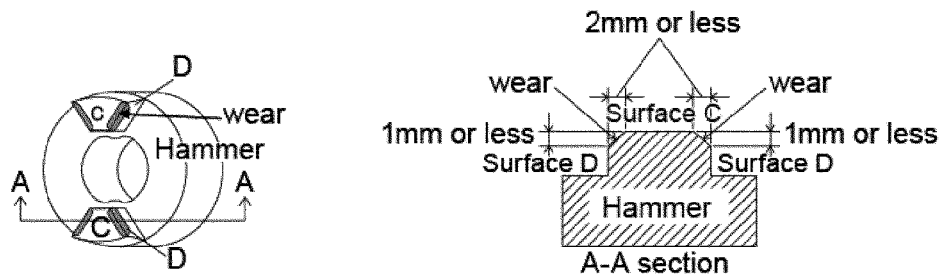


Fig. 2

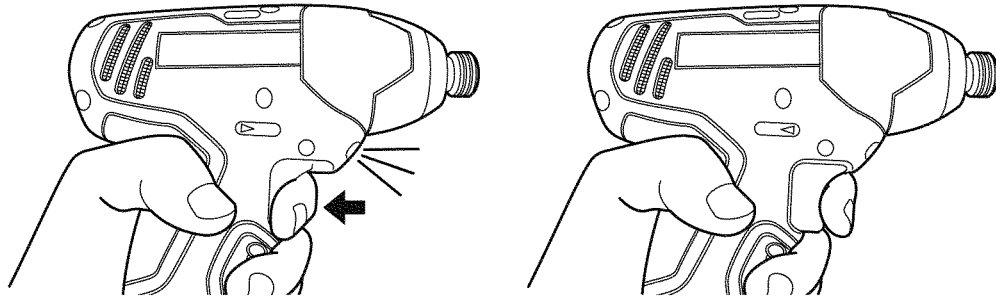
## 3.2. Trial Operation (After Checking Troubleshooting Guide)

### 3.2.1. Assembly

- Confirm if there is no gap between housing A and B by pinching lead wires.
- There is no dust, foreign substances, or deformation on battery terminals.

### 3.2.2. Operation

- Check whether the tool operates properly in both the forward and reverses directions.
- Check whether the LED light illuminates when the trigger depressed and turns off when the trigger is released.



- Check whether the tool speed increases continuously as the trigger is gradually engaged.
- Check whether the tool speed is normal after repair and reassembly.  
Speed: 2700 RPM (approx.)

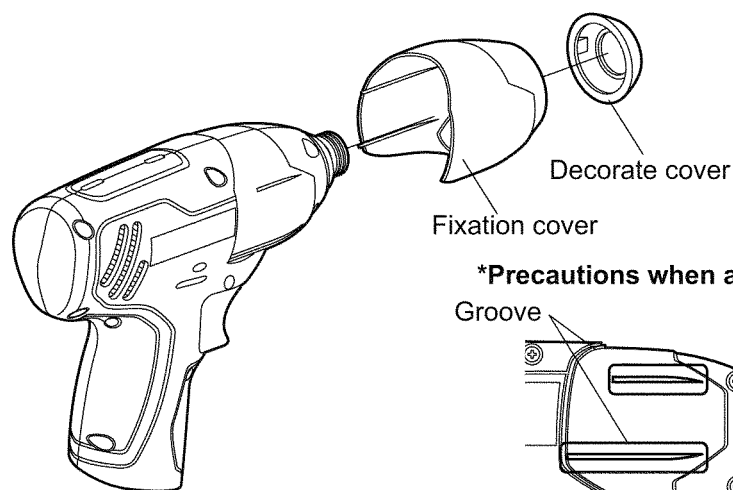
### 3.2.3. Integrity

- With the switch activated, shake the tool back and forth and up and down and verify that its sound does not change excessively.
- Confirm if the chuck jaws move smoothly and hold the bit firmly.

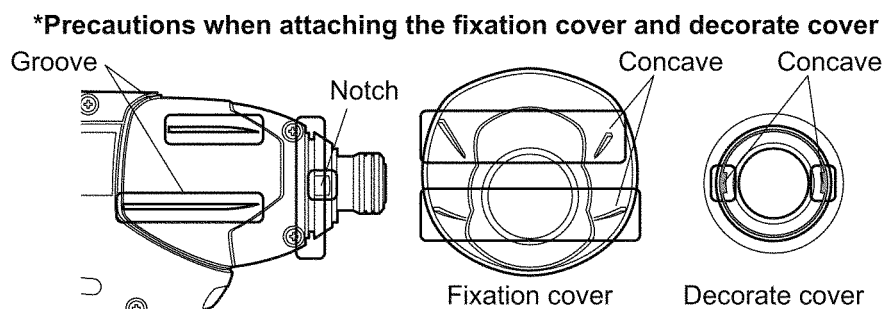
## 4 Disassembly and Assembly Instructions

\* To assemble the tool, start with 4-5 and proceed to 4-1.

### 4.1. Removing the fixation cover and rubber cover

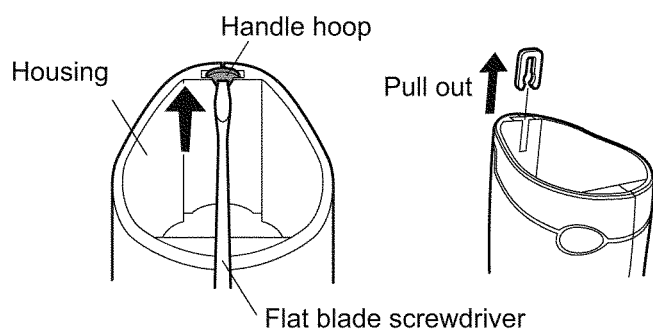


Remove the decorate cover and fixation cover from main tool.



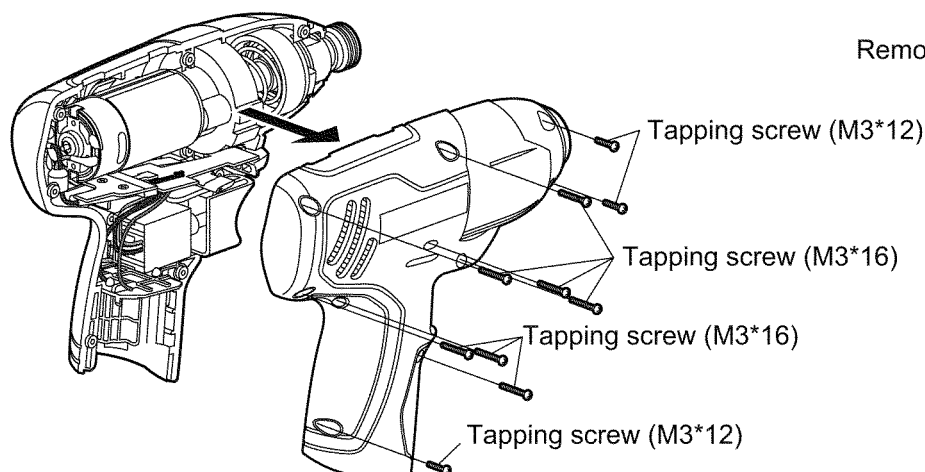
Attach the fixation cover, aligning the protruding part with the groove on the housing. Attach the decorate cover, aligning the protruding part with the notch on the housing.

### 4.2. Removing the handle hoop



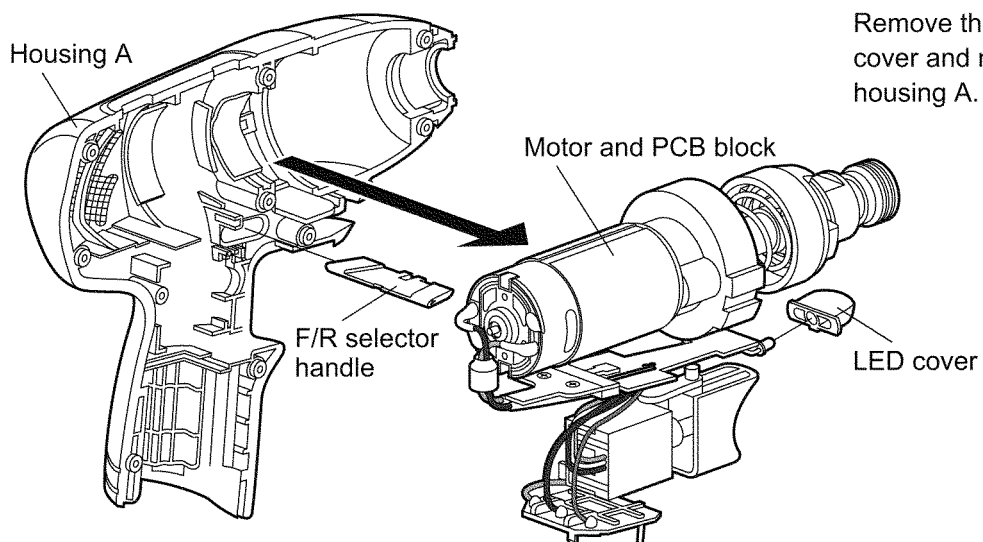
Pull on the handle hoop with a flat-blade screwdriver or other suitable tool and remove it from the housing.

### 4.3. Removing the housing

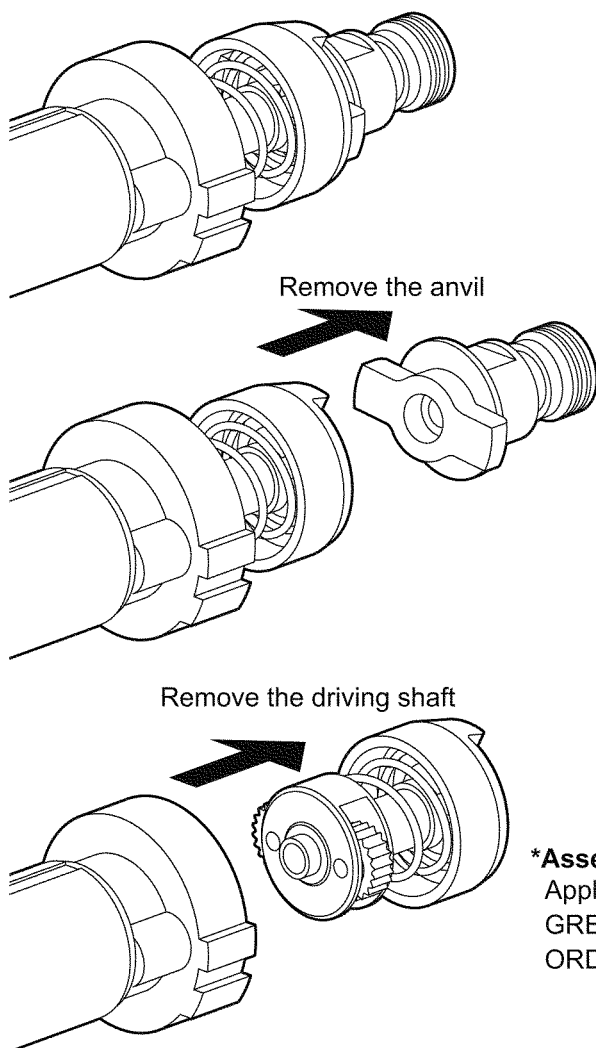


Remove ten screws.

#### 4.4. Removing the Motor and PCB block, F/R selector handle and LED cover



#### 4.5. Removing the driving block and anvil from motor



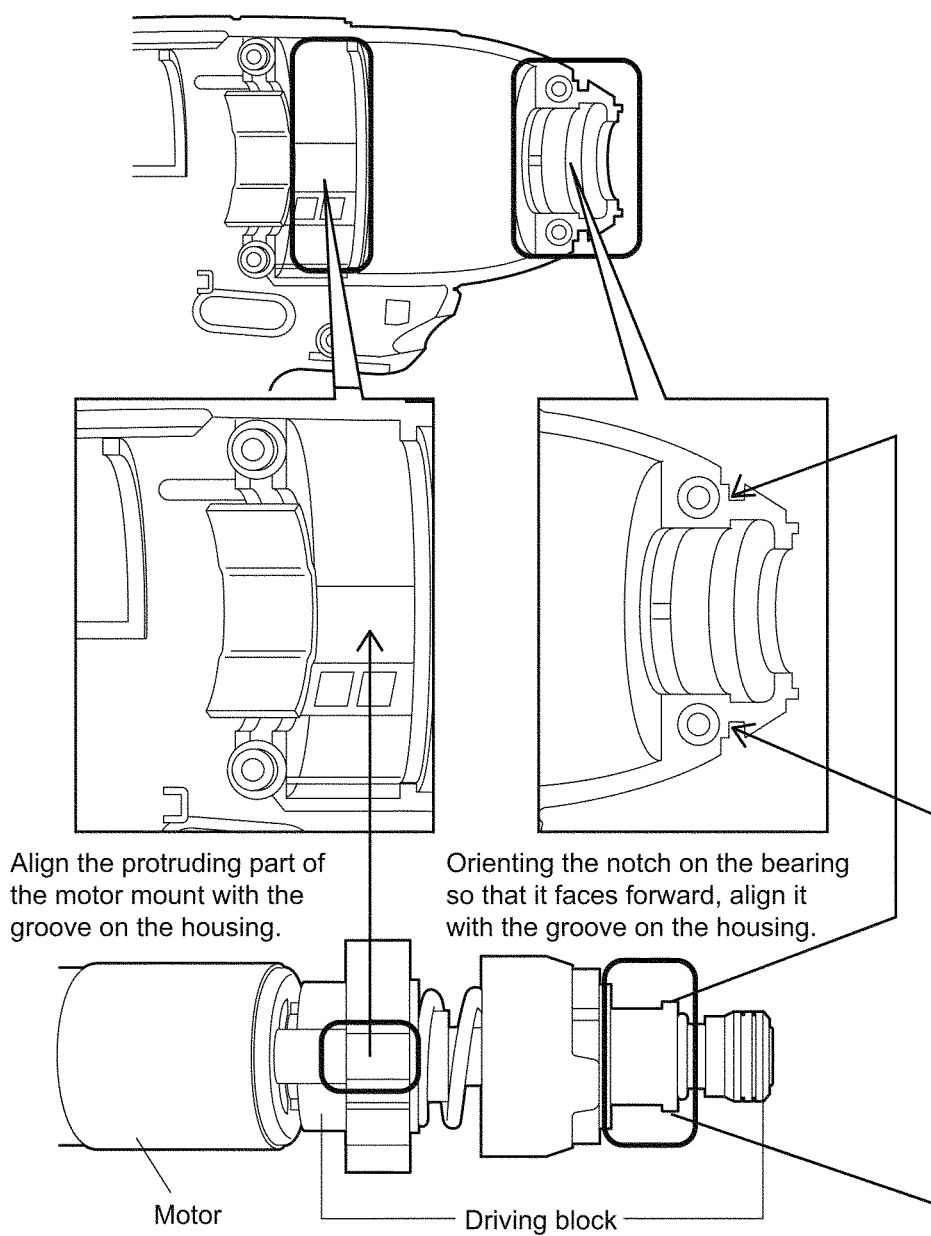
##### **\*Assembly precaution**

Apply grease to the anvil, hammer and gears.

GREASE: ALVANIA

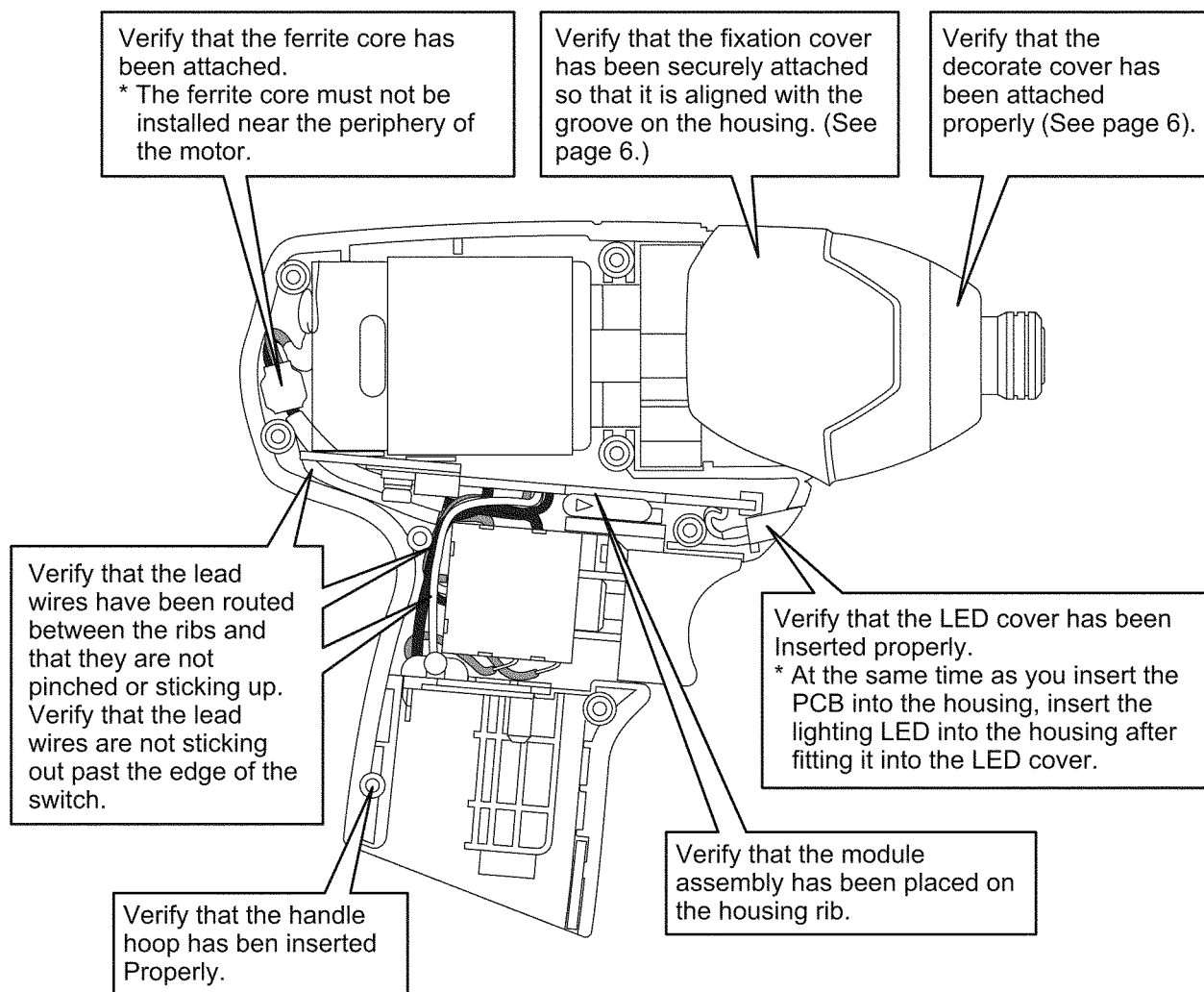
ORDER No.: WEY001T8907

#### 4.6. Important note regarding the installation of motor and driving block

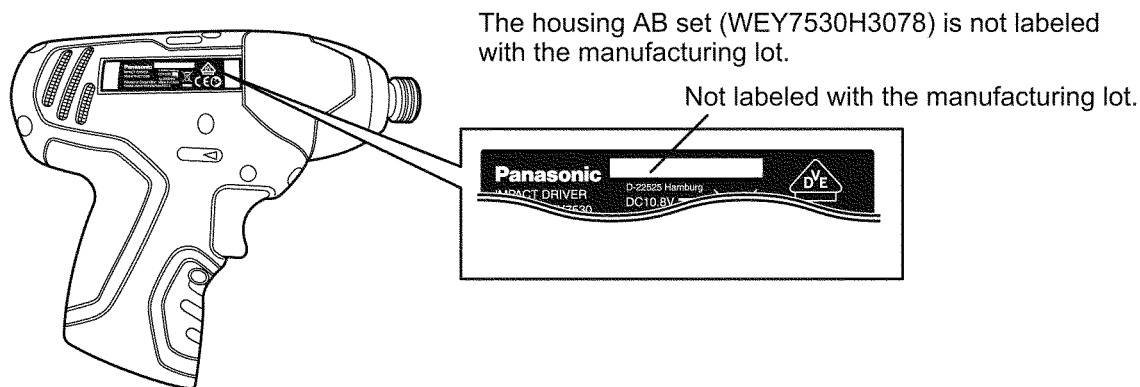




## 4.7. Wiring and Assembly Points



\*Housing AB set manufacturing lot



## 5 Wiring Connection Diagram

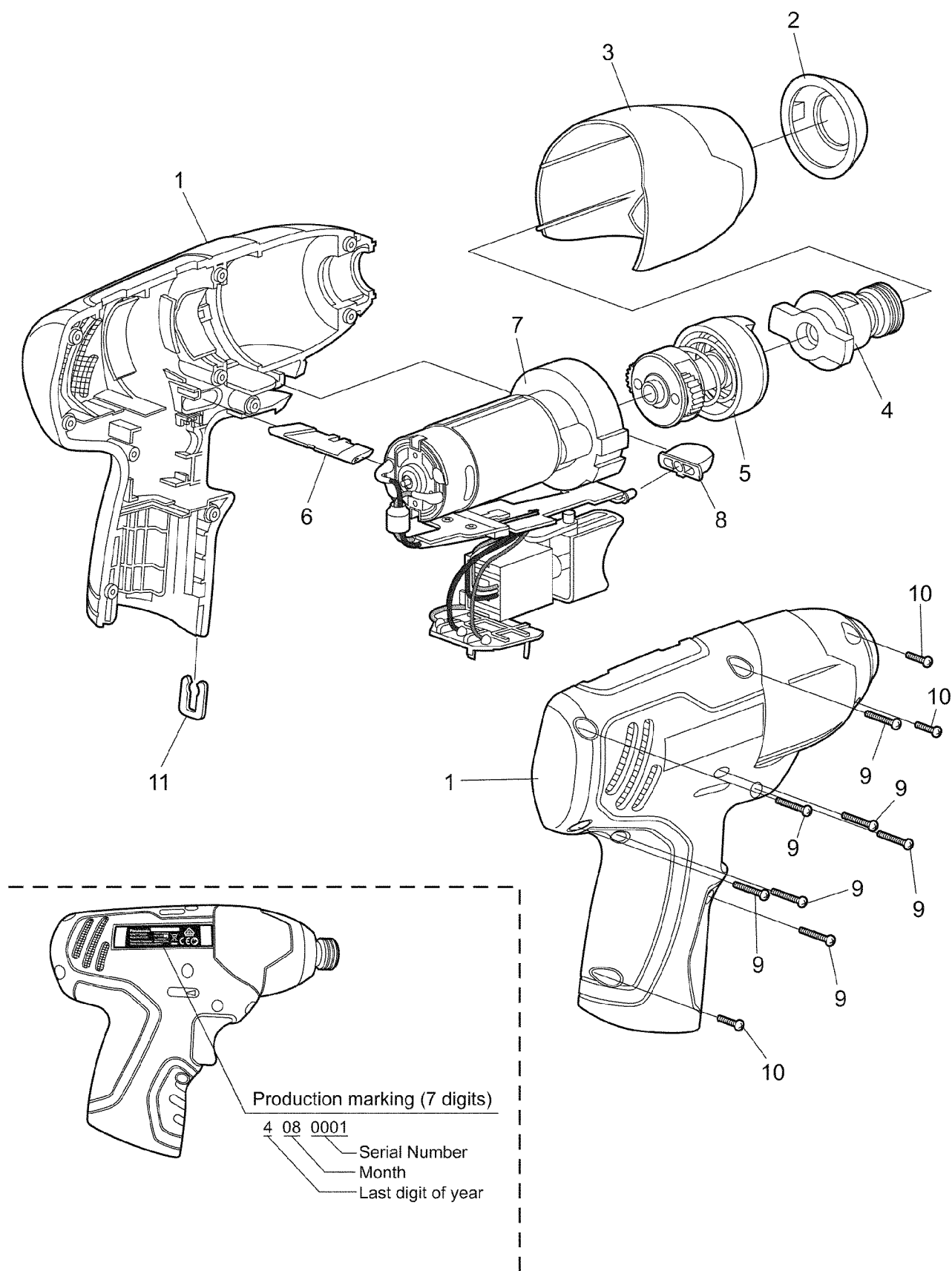
Omitted due to use of blocks.

## 6 Schematic Diagram

Omitted due to use of blocks.

## 7 Exploded View and Replacement Parts List

### 7.1. Exploded View



\*The housing AB set (WEY7530H3078) is not labeled with the manufacturing lot.

## 7.2. Replacement Prts List

Safety	Ref. No.	Part No.	Part Name & Description	Quantity	Remarks
	1	WEY7530H3078	HOUSING AB SET	1	
	2	WEY7530K3108	DECORATE COVER	1	
	3	WEY7530H3138	FIXATION COVER	1	
	4	WEY7530L1128	SPINDLE BLOCK	1	
	5	WEY7530L1618	HAMMER BLOCK	1	
	6	WEY7530H3248	F/R SELECTOR HANDLE	1	
	7	WEY7530L1008	MOTOR & PCB BLOCK	1	
	8	WEY7530L0548	LED COVER	1	
	9	WEY7430K9038	TAPPING SCREW	7	(M3*16) , (8PCS/PACK)
	10	WEY7530K9038	TAPPING SCREW	3	(M3*12) , (3PCS/PACK)
	11	WEYFLA1A1007	HANDLE HOOP	1	
	-	WEY7530K7018	TOOL CASE	1	(for COMBO-SET)
	-	WEY7530K8108	OPERATING INSTRUCTIONS	1	
	-	WEY001T8907	GREASE (ALVANIA)	1	